



MATHEMATICAL LITERACY: PAPER II

EXAMINATION NUMBER

--	--	--	--	--	--	--	--	--	--	--	--	--	--	--	--	--	--	--	--

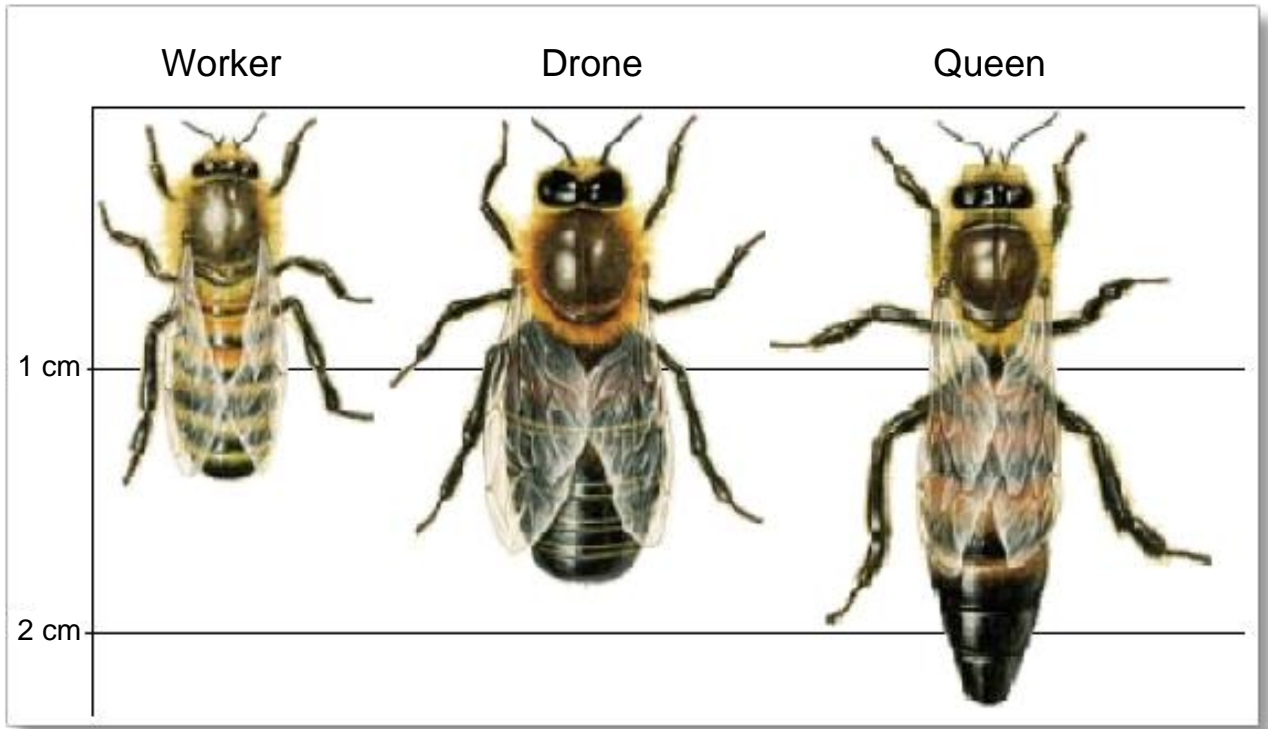
ANSWER SHEET

QUESTION 1.1

Salary for:	Working	Salary increase of 6% at end of:
Year 1: R216 000		Year 1: R_____
Year 2: R_____		Year 2: R_____
Year 3: R_____		

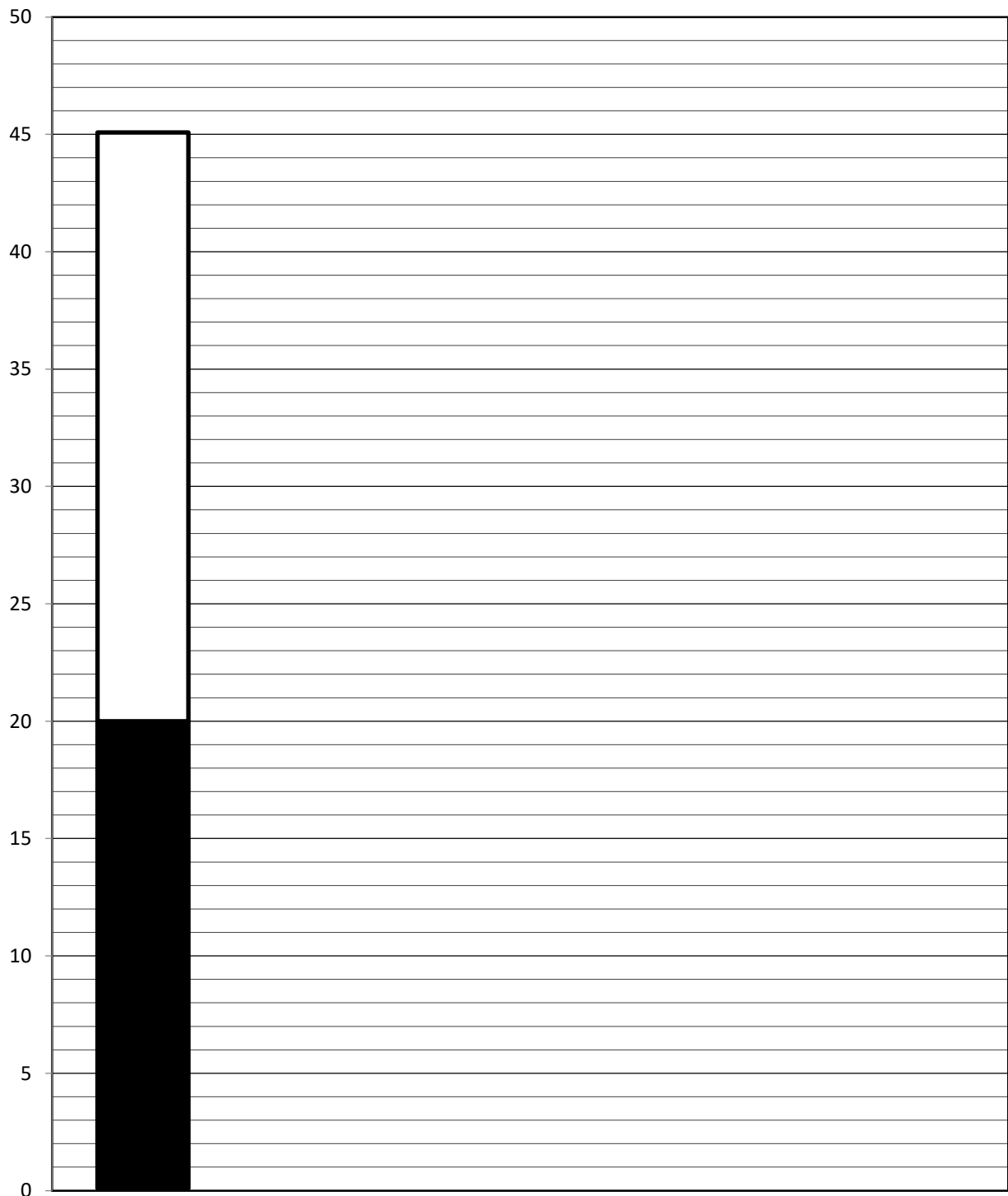
(5)

QUESTION 4.1.2



The actual length of the Drone is _____ (4)

QUESTION 4.2.6



(8)