

TEACHERS WITHOUT BORDERS PROGRAMME

BROUGHT TO YOU BY



basic education

Department:
Basic Education
REPUBLIC OF SOUTH AFRICA

With grateful thanks to our associate partners, The [National Department of Basic Education](#), The [Independent Examinations Board](#), [Siyavula Education](#), [Smarticks](#), [Noteshare](#), [Lemonlicious](#), [datacentrix](#), and most of all, to the schools and teachers from both the public and private education sectors who as founder contributors, have lent content to the [Teachers without Borders programme](#), for the benefit of all South Africa's learners.

In Bill Gates words, at the Mandela Day 'Living Together' address: "Maintaining the quality of this country's higher education system while expanding access to more students will not be easy. But it's critical to South Africa's future" – working together, we can help achieve this."

Contributing schools to date:

Clifton School	Milnerton High	Rustenburg Girls' High	St Peter's
Durban Girls'	Northwood High	St Anne's DC	St Stithians
Fairmont High	Roedean	St John's DSG	Wynberg Boys' High
Herzlia High	Rondebosch Boys'	St Mary's DSG Kloof	Wynberg Secondary

Grade 8 NS test Memo

Feb 2017

1.1D ✓✓

1.2A ✓✓

1.3B ✓✓

(6)

[6]

2.1 Chlorophyll ✓

2.2 Mitochondria ✓

2.3 Potential ✓

2.4 Endotherms ✓

(4)

[4]

3.1. E ✓

3.2 C ✓

3.3 F ✓

3.4 A ✓

3.5 B ✓

(5)

[5]

4.1 An interdependency ✓

(1)

4.2 The bird needs the food it receives from the crocodile's teeth ✓ and the crocodile's teeth need to be cleaned ✓. This interdependency is driven by the bird's need for food/energy. ✓ (3)

[4]

5.1 Water + carbon dioxide -----> Glucose + oxygen

(3)

5.2.1 Starch ✓, cellulose ✓, sucrose ✓

(3)

5.2.2 Starch- energy storage molecule in plants ✓

Cellulose - provides structure and support to plants ✓

Sucrose - the form in which sugar is transported from 1 part of the plant to another ✓ (3)

[9]

6.1 The clear lime water will turn milky. ✓

(1)

6.2 Carbon dioxide ✓

(1)

6.3.1 The amount of glucose/sugar added ✓

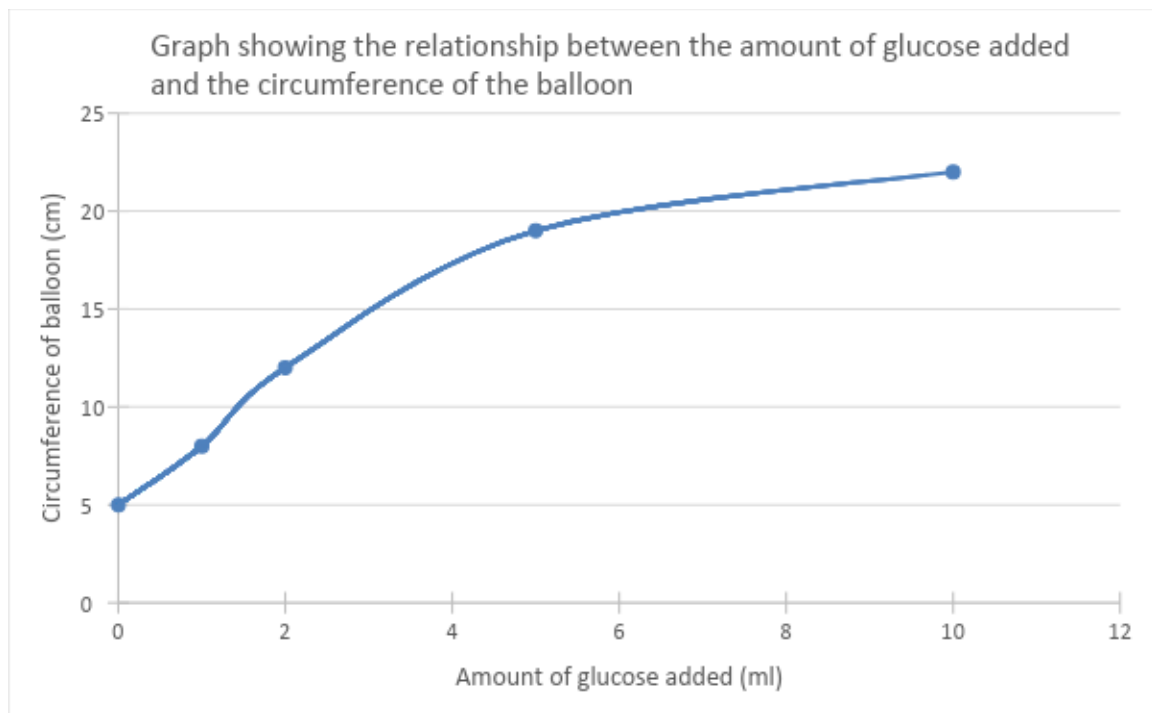
(1)

6.3.2 The (change in) circumference of the balloon/the amount of carbon dioxide produced ✓ (1)

6.5 As the amount of sugar added increases, the balloon will get bigger/the amount of CO₂ produced increases ✓ OR any other acceptable hypothesis

(1)

6.6



(7)

[12]

GRAND TOTAL 40 MARKS