



Western Cape  
Government

Education

Directorate: Curriculum GET

Quality  
learning  
@ home



**GET Term 2 Take Home Package**

**Social Sciences: Geography**

**Grade 7**

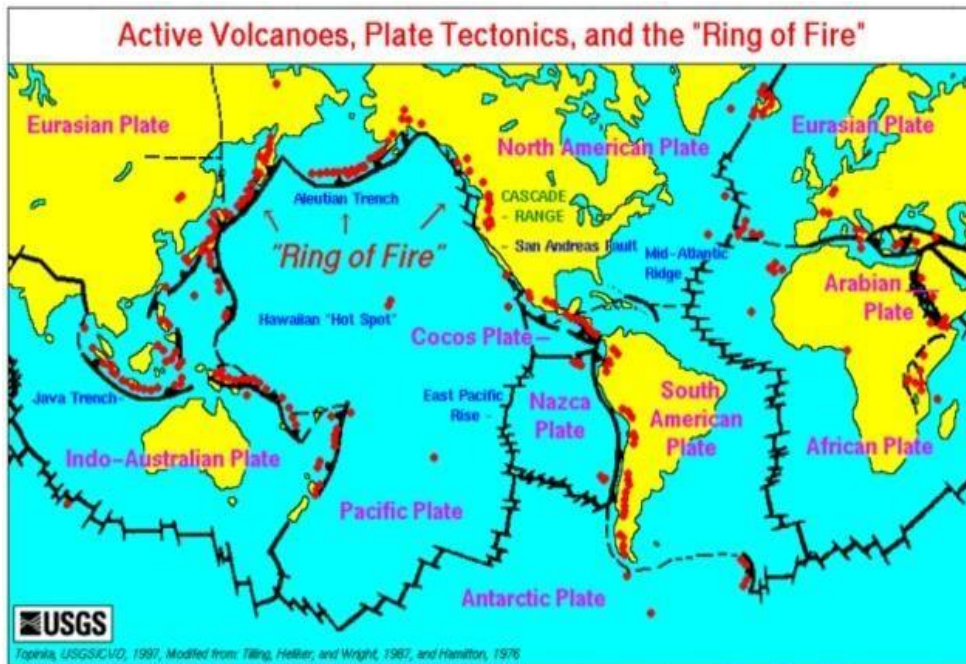
**Question 1: True/False**

Many human activities are to blame for environmental causes of floods.

TRUE

FALSE

This image refers to question: 2, 3



[http://vulcan.wr.usgs.gov/Glossary/PlateTectonics/Maps/map\\_plate\\_tectonics\\_world.html](http://vulcan.wr.usgs.gov/Glossary/PlateTectonics/Maps/map_plate_tectonics_world.html), Sept, 2007

**Question 2: Text Input**

The jagged black lines on the map indicate ... lines.

**Question 3: True/False**

The Arabian plate is one of the major tectonic plates.

TRUE

FALSE

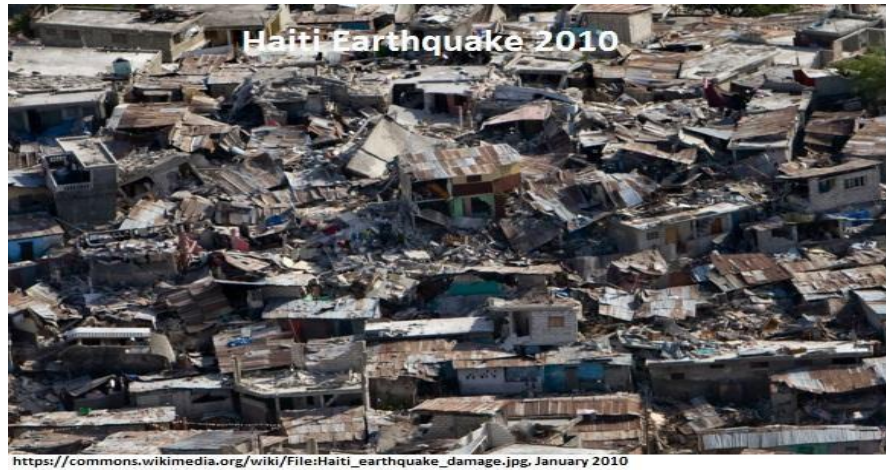
**Question 4: True/False**

Floods occur when the rain falls faster than the soil, wetlands and rivers or dams can absorb the runoff.

TRUE

FALSE

This image refers to question: 5,6



**Question 5: Text Input**

When an earthquake destroys homes, shops, schools, businesses, factories and hospitals; people can no longer work and are forced to move from the area in which they live.

This movement of people is called ... .

**Question 6: Multiple Choice**

The earthquake that struck Haiti in 2010 killed about 300 000 people.

Most injuries and deaths happen where ... .

- A: houses are poorly built.
- B: a huge amount of people live in a small area.
- C: there are no warning systems that allow people to evacuate their homes.
- D: there is a lack of good disaster management plans to help rescue people.

|          |               |
|----------|---------------|
| <b>A</b> | A and B       |
| <b>B</b> | A, B and C    |
| <b>C</b> | C and D       |
| <b>D</b> | A, B, C and D |
| <b>E</b> | A, C and D    |

This image refers to question: 7

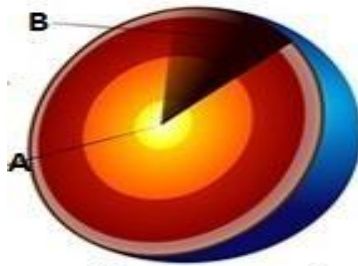


**Question 7: Text Input**

Complete the paragraph with one word:

A volcano is an opening in the earth's surface from which the molten rocks and gases escape out. Once the magma erupts through the Earth's surface, it is called ... .

This image refers to question: 8



[https://en.wikipedia.org/wiki/Mantle\\_convection#/media/File:Earth-crust-cutaway-numbered.svg](https://en.wikipedia.org/wiki/Mantle_convection#/media/File:Earth-crust-cutaway-numbered.svg), March 2012

**Question 8: Text Input**

The innermost layer of the Earth, labelled A, is called the ... .

**This image refers to question: 9**



<https://www.flickr.com/photos/69583224@N05/6793158186>, January 2010

**Question 9: True/False**

In the nights following the earthquake, many people in Haiti slept in the streets, on pavements, in their cars, or in makeshift shanty towns because they were afraid that standing buildings would not stand up to aftershocks.

**TRUE**

**FALSE**

**Question 10: Please Fill In The Blanks**

The Earth's mantle is made up of minerals rich in (1), (2), (3) and (4).

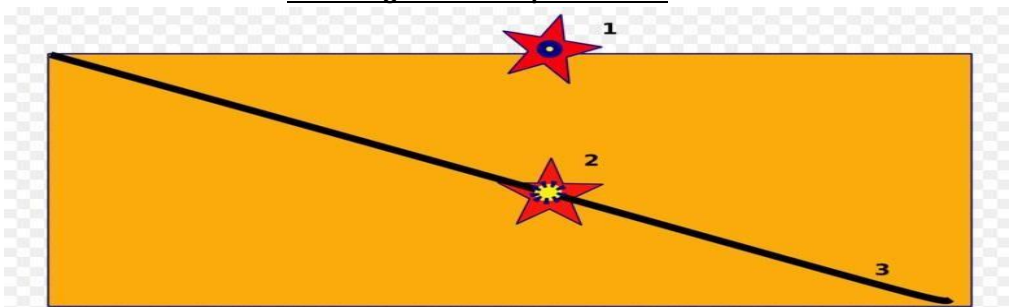
(Give your answers in alphabetical order.)

Possible Answers: oxygen | nitrogen | carbon | silica | magnesium | hydrogen | iron

|          |  |
|----------|--|
| <b>1</b> |  |
| <b>3</b> |  |

|          |  |
|----------|--|
| <b>2</b> |  |
| <b>4</b> |  |

**This image refers to question: 11**



[https://commons.wikimedia.org/wiki/File:Epicenter\\_Hypocenter.svg](https://commons.wikimedia.org/wiki/File:Epicenter_Hypocenter.svg), May 2006

**Question 11: Please Fill In The Blanks**

Number 3 represents a fault line.

Number 2 is the point within the earth where the earthquake starts and is called the (1) .

Number 1 is the (2) .

Possible Answers: centre | epicentre | hypocentre | tectonic plate

|          |  |
|----------|--|
| <b>1</b> |  |
|----------|--|

|          |  |
|----------|--|
| <b>2</b> |  |
|----------|--|



**This text refers to question: 12**

**Floods hit Laingsburg**

CAPE TIMES / 09 January 2014 at 07:37am

By: Caryn Dolley

Cape Town - Laingsburg is again under siege, hit by what some say is the worst flooding since the terrible flood of 33 years ago that wiped out half the buildings in town. On Wednesday, the N1 was closed for several hours as farms were cut off and crops submerged. Communication systems were failing amid dramatically rising river levels and some homes had to be evacuated.

A joint operations centre has been set up in the Karoo town and a number of rescue resources, including helicopters, are on standby in case the situation becomes worse. On Wednesday, Laingsburg residents described to the Cape Times how continuous rain and thunder showers had pummelled the area and how one resident, who had survived the first flood 33 years ago, had to be medically treated after suffering a panic attack. "It's just about as bad as it was during the 1981 flood," Francis van Wyk, 75, who experienced the first flood and started a museum around the event, said.

"It's an experience of a lifetime to be going through it again," she said. On January 25, 1981, a flood there resulted in 104 people being killed and 185 houses and 23 business premises being destroyed. On Wednesday, the Buffels, Wilgenhout and Baviaans rivers in the Laingsburg area flooded. Telephone, cellphone and internet connections in Laingsburg were intermittent as a result of the weather and at one stage, part of the N1 highway had been closed due to flooding.

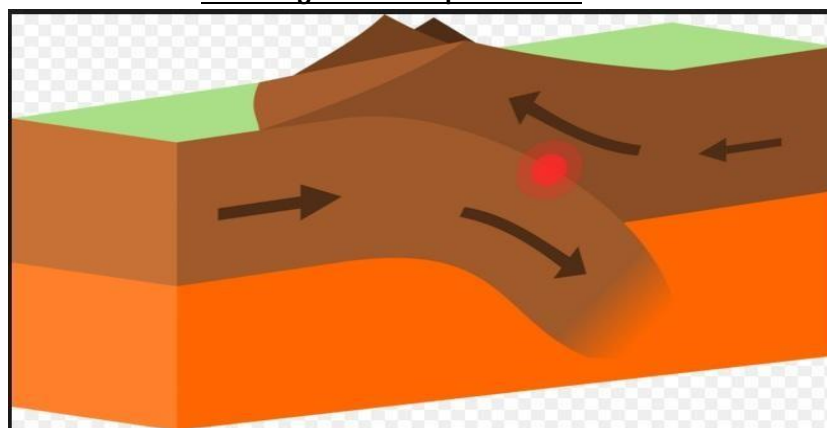
The province's disaster management chief director, Colin Deiner, said it was expected to rain in Laingsburg until tomorrow, but the amount expected to fall was set to decrease progressively. A spotter aircraft was meant to have flown over the area to assess damages on Wednesday, but Deiner said the weather had been unsuitable for this. He said there was concern for some farmers in the area.

Agri Wes-Cape chief executive Carl Opperman said farms below the Floriskraal Dam, which reached a capacity of more than 150 percent, had experienced damage. Those farmers were involved with producing onion and carrot seeds. Opperman said vineyards had also been affected, as had apricot, peach and pear crops. He said it was too early to determine the extent of the damage. "We're battling to get hold of people. There are no communications. Some people are completely cut off," Opperman said. He said the weather front, that initially hit on Tuesday afternoon, had been "totally unexpected". [Source: <http://www.iol.co.za/capetimes/floods-hit-laingsburg-1629720>]

**Question 12: Text Input**

How many rivers flooded the area of Laingsburg in 2014?

**This image refers to question: 13**



[https://en.wikipedia.org/wiki/Convergent\\_boundary#/media/File:Continental-continental\\_destructive\\_plate\\_boundary.svg](https://en.wikipedia.org/wiki/Convergent_boundary#/media/File:Continental-continental_destructive_plate_boundary.svg), Dec 2015

**Question 13: Multiple Choice**

The Himalayan Mountains were formed when the Indian plate collided with the Eurasian plate.

This type of plate movement is called a ... plate movement.

- |          |                 |
|----------|-----------------|
| <b>A</b> | convergent      |
| <b>B</b> | divergent       |
| <b>C</b> | transform young |
| <b>D</b> | plate           |

**This image refers to question: 14**



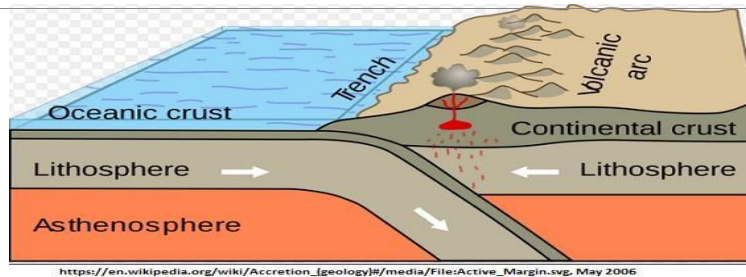
**Question 14: Please Fill In The Blanks**

Farming is an environmental factor that causes floods when there is (1) and (2) on the land. (Answer in alphabetical order.)

Possible Answers: overgrazing | ploughing | grazing | over-cultivation

|          |  |          |  |
|----------|--|----------|--|
| <b>1</b> |  | <b>2</b> |  |
|----------|--|----------|--|

**This image refers to question: 15**



**Question 15 Please Fill In The Blanks**

The tectonic plates are made up of the oceanic and continental (1) .

They float on the plastic upper mantle called the (2) .

Possible Answers: trench | crust | asthenosphere | volcanic arc | lithosphere

|          |  |          |  |
|----------|--|----------|--|
| <b>1</b> |  | <b>2</b> |  |
|----------|--|----------|--|

---

**This text refers to question: 16**

**Koeberg sitting alongside fault line**

SCITECH/SCIENCE/ENVIRONMENT / 16 March 2011

By: Melanie Gosling

Cape Town - Koeberg nuclear power station is sitting alongside a geological fault which gave rise to an earthquake in 1809 that was the same magnitude as last month's earthquake in Christchurch, New Zealand.

The Milnerton fault lies about 8km offshore of Koeberg. New Zealand's earthquake, which killed 145 people, measured 6.3 on the Richter scale. Cape Town's earthquake 200 years ago, which had its epicentre in present-day Milnerton, is estimated to have measured between 6.3 and 6.5. Several earthquakes in Cape Town have been recorded from this fault, including a small one in May 2009. Seismic experts have rated the earthquake risk as "rare, but a very real threat for Cape Town".

The government intends doubling South Africa's nuclear power capacity and, in spite of the earthquake risk, Koeberg has been selected as one of the sites for more nuclear stations. Eskom says it is aware of the fault line, but has built Koeberg to withstand an earthquake of 7.

**Question 16: Multiple Choice**

According to people who study earthquakes, Cape Town ... .

- |          |                                                                                |
|----------|--------------------------------------------------------------------------------|
| <b>A</b> | will never experience an earthquake                                            |
| <b>B</b> | could experience a strong earthquake                                           |
| <b>C</b> | had a strong earthquake at the same time (2011) as Christchurch in New Zealand |
| <b>D</b> | will only experience earthquakes at the Koeberg Nuclear Power Station.         |