



**Subject:** Grade 7 Natural Sciences  
**Topic:** Natural Science: Exam Term 2  
**Total:** 114 Marks

**Name:** \_\_\_\_\_

**Date:** \_\_\_\_\_

---

**Question 1: Multiple Choice**

4 marks

Which one of the following would be the best treatment for indigestion?

- |          |                              |
|----------|------------------------------|
| <b>A</b> | an antacid tablet            |
| <b>B</b> | a glass of orange juice      |
| <b>C</b> | half a glass of salt water   |
| <b>D</b> | a cheese-and-tomato sandwich |
- 

**Question 2: Text Input**

3 marks

Their dry skins are covered with scales. Most of them have two pairs of legs. Some have no legs. This means that they either walk or slither.

This group of vertebrates belong to the class of ... .

(Name the class and not an animal).

--

---

**This image refers to question: 3**



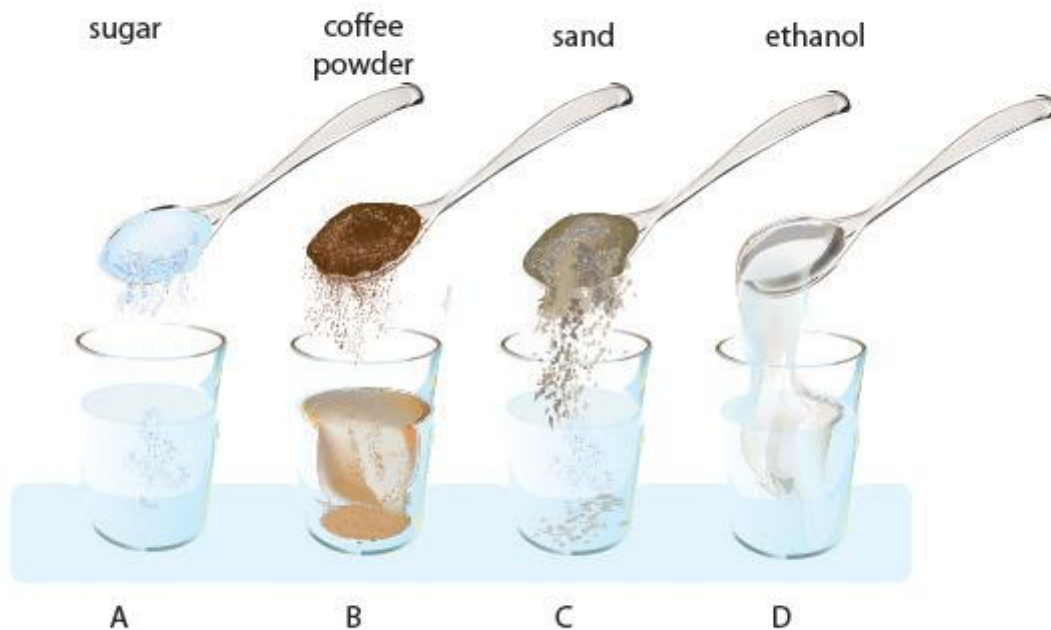
**Question 3: Multiple Choice**

4 marks

Plants evolved in different ways to get their seeds dispersed. Which plant in the graphic makes use of the wind to disperse its seeds?

- |          |   |
|----------|---|
| <b>A</b> | A |
| <b>B</b> | B |
| <b>C</b> | C |
| <b>D</b> | D |

**This image refers to question: 4**



**Question 4: Multiple Choice**

4 marks

The graphic shows four glasses, all with the same amount of hot water. A teaspoon of another substance is added to each glass and the water is stirred.

Which mixture can be separated by filtration?

- |          |   |
|----------|---|
| <b>A</b> | A |
| <b>B</b> | B |
| <b>C</b> | C |
| <b>D</b> | D |

**Question 5: True/False**

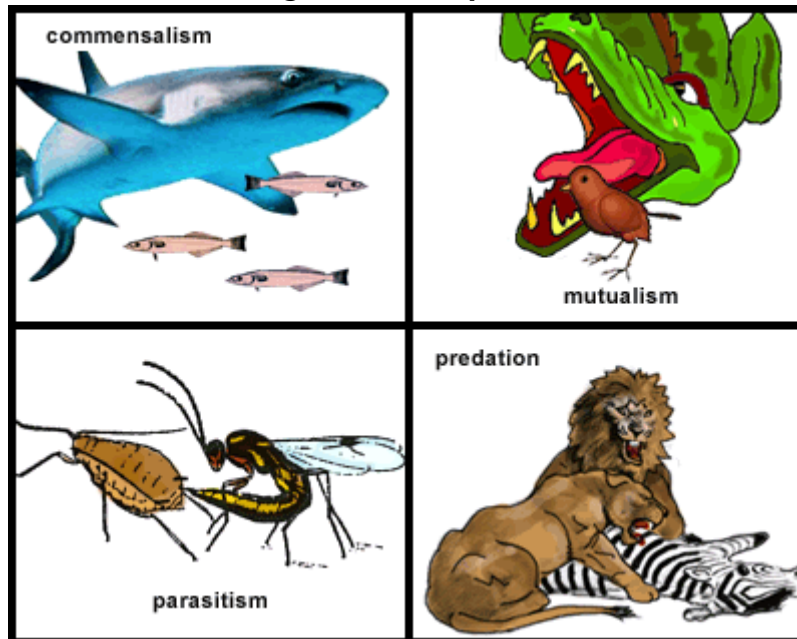
2 marks

Salt water is not a mixture, because it is impossible to distinguish the salt from the water.

**TRUE**

**FALSE**

**This image refers to question: 6, 7**



**Question 6: True/False**

2 marks

Predation and parasitism can be called HARMFUL relationships.

**TRUE**

**FALSE**

**Question 7: Multiple Choice**

4 marks

Choose the relationship where two unlike organisms benefit from living closely together.

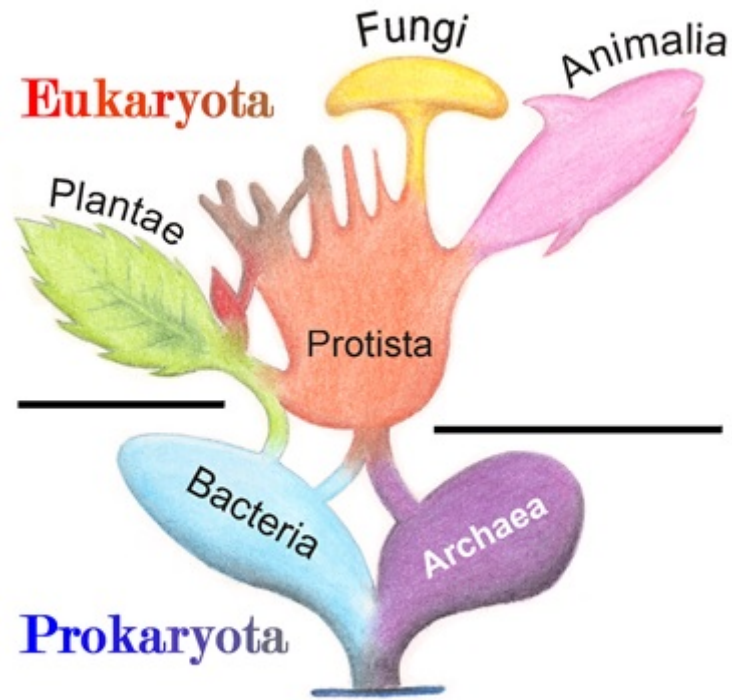
- A** parasitism
- B** mutualism
- C** predation
- D** commensalism

**Question 8: Text Input**

3 marks

A pure substance that cannot be broken down into simpler substances is called an ... .

**This image refers to question: 9**



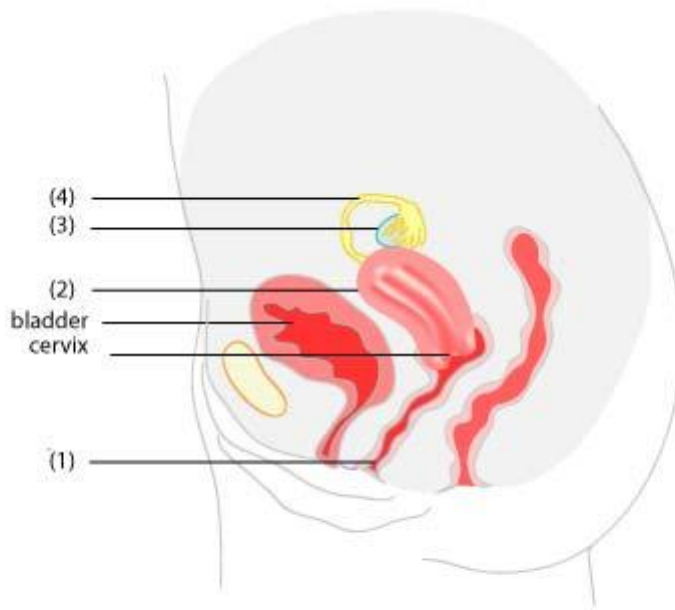
[https://commons.wikimedia.org/wiki/File:Tree\\_of\\_Living\\_Organisms\\_2.png](https://commons.wikimedia.org/wiki/File:Tree_of_Living_Organisms_2.png)

**Question 9: Text Input**

3 marks

Eukaryota are organisms within the *kingdoms of life* which have cells with a distinct ... .

**This image refers to question: 10**



**Question 10: Please Fill In The Blanks**

8 marks

The graphic shows the female reproductive organs. Identify the correct labels:

- Label 1: (1) .
- Label 2: (2) .
- Label 3: (3) .
- Label 4: (4) .

Possible Answers: uterus | vagina | rectum | appendix | Fallopian tube | urethra | ovary | liver

<b>1</b>	
<b>3</b>	

<b>2</b>	
<b>4</b>	

**Question 11: True/False**

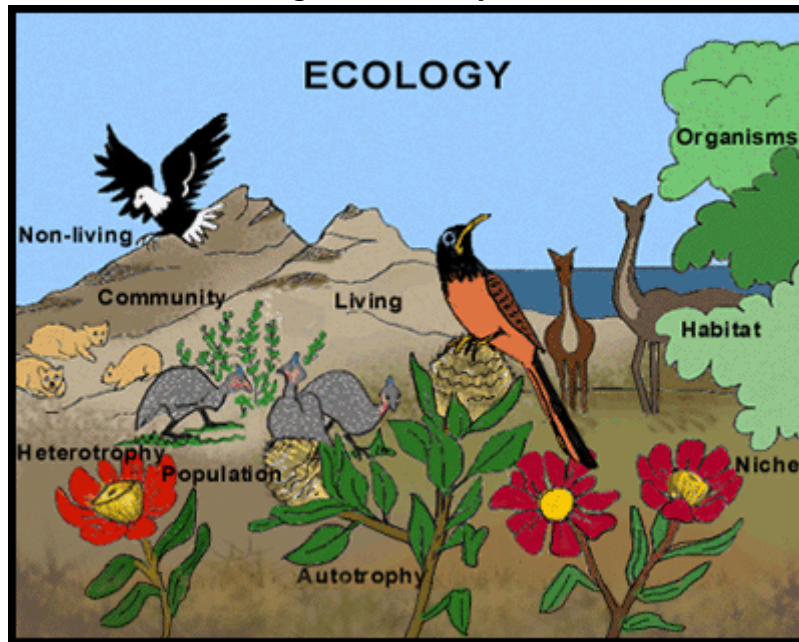
2 marks

By mixing acids with bases, crystals are formed.

<b>TRUE</b>
-------------

<b>FALSE</b>
--------------

This image refers to question: 12



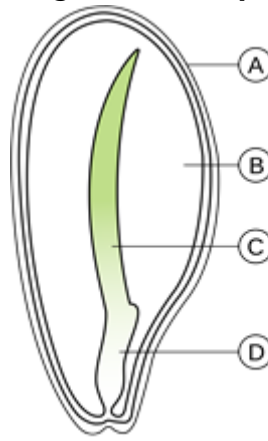
**Question 12: Multiple Choice**

4 marks

DIFFERENT species (populations) which live together in the SAME habitat are called ... .

- |          |             |
|----------|-------------|
| <b>A</b> | populations |
| <b>B</b> | communes    |
| <b>C</b> | communities |
| <b>D</b> | niches      |

**This image refers to question: 13**



**Question 13: True/False**

2 marks

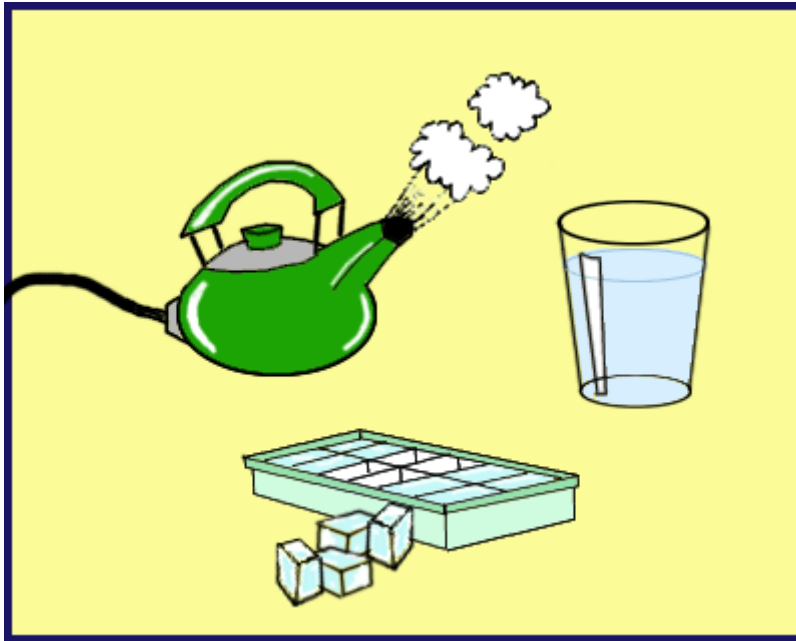
This seed belongs to a monocotyledonous plant.

**TRUE**

**FALSE**



**This image refers to question: 14**



**Question 14: Multiple Choice**

4 marks

Matter that keeps a definite shape is known as a ... .

- |          |          |
|----------|----------|
| <b>A</b> | gas      |
| <b>B</b> | solution |
| <b>C</b> | liquid   |
| <b>D</b> | solid    |

**Question 15: True/False**

2 marks

The symbol for magnesium on the Periodic Table is Mn.

**TRUE**

**FALSE**

**Question 16: Multiple Choice**

4 marks

A learner tests a certain hand soap with litmus paper. The litmus paper shows that the soap is acidic. The learner is confused, because soaps feel slippery and are usually basic.

Which one of the following best explains why the soap tested as acidic?

- |          |  |
|----------|--|
| <b>A</b> | The soap container shows that it has a lemon fragrance. Lemon juice was probably added to the soap when it was made.   |
| <b>B</b> | The learner held the litmus paper upside-down and therefore the test did not work.                                     |
| <b>C</b> | All soaps are slightly acidic. This is because the human skin is somewhat acidic and becomes irritated by basic soaps. |
| <b>D</b> | Hand soaps are acidic to ensure that children do not try to eat the soap.  |
- 

**Question 17: Text Input**

3 marks

When an animal or plant has disappeared from the earth, we say that it is ... .

---

**Question 18: True/False**

2 marks

All chemical substances are either basic or acidic.

<b>TRUE</b>	<b>FALSE</b>
-------------	--------------

---

**Question 19: Text Input**

3 marks

... contain the sexual organs of angiosperms.

---

**Question 20: Please Fill In The Blanks**

8 marks

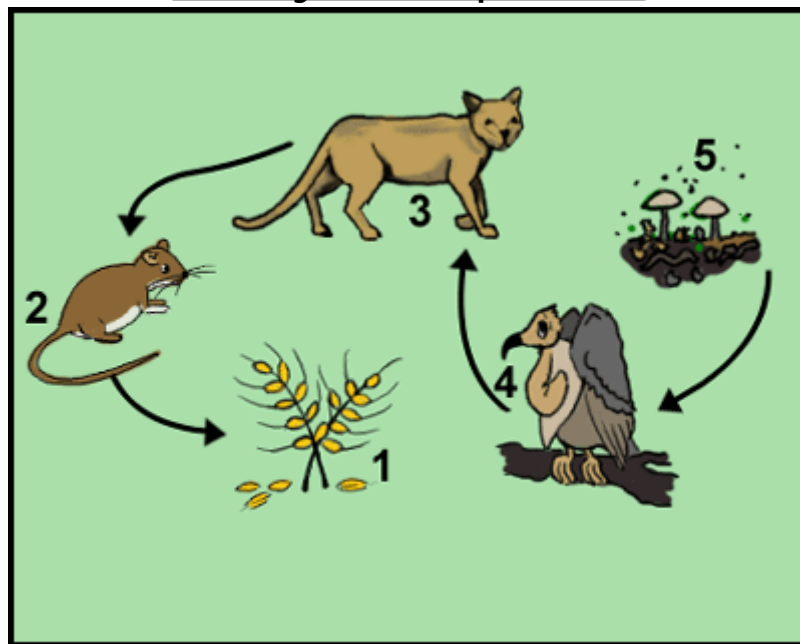
The boiling point of a substance is the (1) at which there is a (2) change in state from the (3) state to the (4) state.

Possible Answers: point | pressure | temperature | rapid | gradual | liquid | gaseous | solid | constant

<b>1</b>	
<b>3</b>	

<b>2</b>	
<b>4</b>	

**This image refers to question: 21**



**Question 21: Please Fill In The Blanks**

6 marks

All living things are divided into groups according to the manner in which they feed. They are the (1) e.g. wheat, (2) e.g. mouse, cat, vulture and (3) e.g. mushroom.

Possible Answers: decomposers | directors | composers | consumers | producers | economy

<b>1</b>	
<b>3</b>	

<b>2</b>	
----------	--

**Question 22: Text Input**

3 marks

While water is boiling, its temperature remains ... .

--

**Question 23: Please Fill In The Blanks**

8 marks

Arrange the following materials from the one with the highest melting point to the one with the lowest melting point.

The material with the highest boiling point is (1), followed by (2) and then (3). The one with the lowest boiling point is (4) .

Possible Answers: candle wax | mercury | oxygen | aluminium

<b>1</b>	
<b>3</b>	

<b>2</b>	
<b>4</b>	

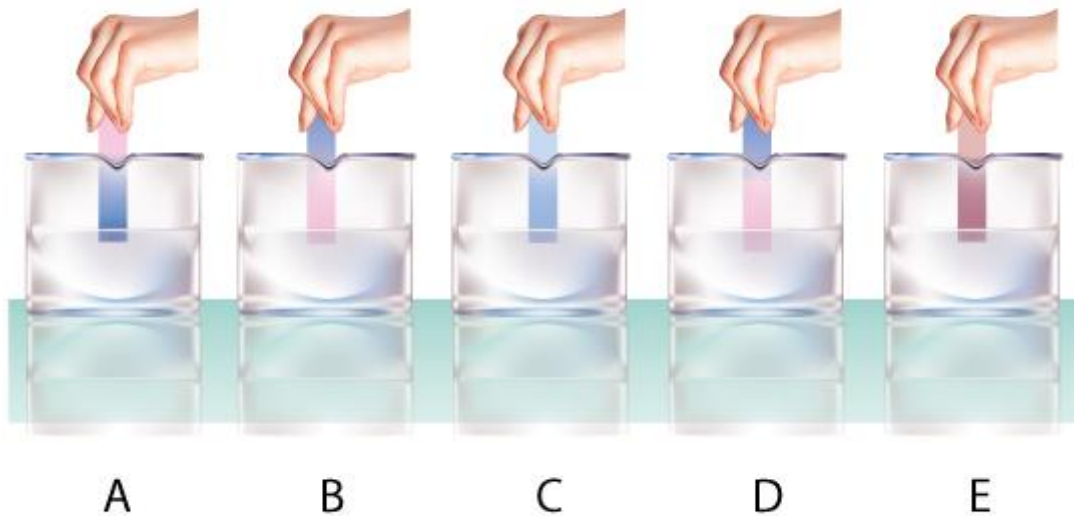
**Question 24: Text Input**

3 marks

Arthropods are animals with jointed legs and a hard outer covering called an ... .

--

**This image refers to question: 25**



**Question 25: Please Fill In The Blanks**

6 marks

The attached graphic shows different substances tested with litmus paper.

Identify the containers that have acids in them. Arranged in alphabetical order they are; (1), (2) and (3) .

Possible Answers: A | B | C | D | E

<b>1</b>	
<b>3</b>	

<b>2</b>	
----------	--

**Question 26: Text Input**

3 marks

K is the symbol for ... on the Periodic Table.

--

**This image refers to question: 27**



**Question 27: True/False**

2 marks

A Swedish scientist, Carolus Linnaeus, introduced the field of classification.

**TRUE**

**FALSE**

---

**Question 28: Multiple Choice**

4 marks

The special scent that some flowers have to attract insects and birds is an example of ... .

- |          |               |
|----------|---------------|
| <b>A</b> | adaptation    |
| <b>B</b> | pollination   |
| <b>C</b> | fertilisation |
| <b>D</b> | dispersion    |
-

**Question 29: Please Fill In The Blanks**

8 marks

Arrange the following substances from the most acidic to the least acidic:

The most acidic is (1), followed by (2) and then (3). The least acidic is (4).

Possible Answers: pool acid | dishwashing liquid | lemon juice | cooking oil

<b>1</b>	
<b>3</b>	

<b>2</b>	
<b>4</b>	

---

**Total: 114 Marks**