

WorksheetCloud.com - Question Sheet

Subject: Grade 7 GEOGRAPHY

Topic: Social Sciences (Geography): Exam Term 4

Total Marks: 103

Question 1 refers to the following graphic

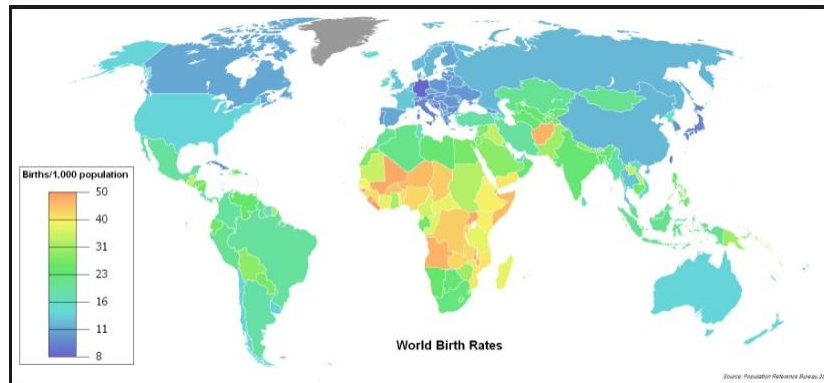


Figure 1: population birth map

Question 1: True/False [2]

The crude birth rate in North America is higher than the crude birth rate in South America.

TRUE

FALSE

Question 2 refers to the following graphic



Figure 2: Cow

Question 2: True/False [2]

This cow is NOT a natural resource.

TRUE

FALSE

Question 3: True/False [2]

South Africa is establishing Transfrontier Conservation Areas (TFCAs) in co-operation with the rest of the world.

TRUE

FALSE

Question 4 refers to the following graphic



Figure 3: Tiger

Question 4: True/False [2]

Zoos are considered to be conservation areas.

TRUE

FALSE

Question 5: True/False [2]

Municipalities are accountable for the state of water under their control.

TRUE

FALSE

Question 6: Multiple Choice [4]

... is the second most common cause of death in infants worldwide.

A malaria

B smallpox

C tuberculosis

D AIDS

E diarrhoea

Question 7: Multiple Choice [4]

The mechanical growth of a population (immigrants - emigrants) is mainly affected by ... factors.

A social and political

B economic and political

C social and economic

D social

E economic

Question 8: Multiple Choice [4]

... is NOT a natural resource.

- A** Air
- B** Marine life
- C** Plastic
- D** Soil

Question 9: Multiple Choice [4]

Fossil fuels release ... when they are burned in power stations or in the engines of cars.

- A** energy
- B** toxic gases
- C** oxygen
- D** water vapour

Question 10 refers to the following graphic



Figure 4: nature

Question 10: Multiple Choice [4]

The ... value of nature cannot have a price put to it.

- A** ethical
- B** aesthetic
- C** aerobic
- D** scientific

Question 11 refers to the following graphic



Figure 5: Wildlife

Question 11: Multiple Choice [4]

The largest game reserve in South Africa is the

- A** Pilansberg National Park
- B** Magalies Wild Game Farm
- C** Polokwane Game Reserve
- D** Kruger National Park

Question 12 refers to the following graphic



Figure 6: wetlands

Question 12: Multiple Choice [4]

The Kamfers Dam Wetland, close to the Big Hole in Kimberley, is one of only four breeding areas of the ... in Africa, and the only one in South Africa.

- A** storks
- B** cranes
- C** lesser flamingos
- D** geese

Question 13 refers to the following graphic



Figure 7: senior-citizens

Question 13: Multiple Choice [4]

Look at the statements about population growth or decline, and choose the statement which is false.

- A** High standards of education provide an opportunity for further education. This paves the way for the training of doctors and medical researchers, potentially lowering the death rate.
- B** If proper medical care is given to the elderly, the death rate will be reduced, since they will live longer.
- C** If clean water is available, water borne diseases such as cholera will not infect citizens. Furthermore, people will be able to properly wash themselves and their clothing. Therefore, having clean water will reduce the death rate.
- D** Some cultures and religions place a high value on having many children. This results in a decreased birth rate.

Question 14: Write Your Answer [3]

Some churches and religions are against contraception and abortion.

This will ... the birth rate.

Question 15 refers to the following text

Major factors affecting life expectancy in South Africa

Aside from HIV there are a number of other things that have a very big impact on life expectancy which is why health experts keep raising them.

Smoking - The largest ever study into the impact of cigarette smoking on life expectancy showed that a life of cigarette smoking will be, on average, 10 years shorter than a life without it. The positive news for smokers is that if you give up while you are still young (before 30) reduces the damage a lot.

Obesity (being fat) - An Oxford University study found that moderate obesity, which is now common, reduces life expectancy by about 3 years, and that severe obesity, which is still uncommon, can shorten a persons life by 10 years. This 10 year loss is equal to the effects of lifelong smoking.

Exercise - A large study in 2005 showed that people who engaged in moderate activity, the equivalent of walking for 30 minutes a day for five days a week, lived about 1.3 to 1.5 years longer than those who were less active. Those who took on more intense exercise -- the equivalent of running half an hour a day five days every week -- extended their lives by about 3.5 to 3.7 years.

Too much Red Meat - A recent study tracked half a million peoples eating habits over 10 years and found that men and women who ate the most red meat had the highest likelihood of dying during the decade.

Alcoholism - This can lead people into serious trouble, and can be physically and mentally destructive. Currently alcohol use is involved in half of all crimes, murders, accidental deaths, and suicides. There are also many health problems associated with alcohol use such as brain damage, cancer, heart disease, and diseases of the liver. Alcoholics who do not stop drinking reduce life expectancy by 10 to 15 years.

Lonliness - According to a study the support of family, friends and neighbours can increase your chances of living to a healthy old age by 50 per cent.

Other things which have been proved to be very detrimental include taking many illegal drugs, having diabetes, not getting enough sleep, reckless driving, not wearing a seatbelt and exposure to harmful chemicals or unhygienic environments.

In South Africa TB is also a major factor and violence is a leading cause of death for men.

Source: <http://hi4life.org/health-info-female/54-major-factors-affecting-life-expectancy-in-south-africa.html>

Question 15: Write Your Answer [3]

The life expectancy of a female in South Africa is 64 years. The life expectancy of a female living in South Africa, who smokes, is about ... years.

Question 16: Write Your Answer [3]

A ... growth rate shows that the number of people in a population over a given period has not changed.

Question 17: Write Your Answer [3]

... fuels, found below the Earth's surface, are a naturally occurring substance.

Question 18 refers to the following graphic

Question 20: Write Your Answer [3]

Poaching ... in the Cape has become a serious problem. Ten times the legal quota of this shellfish is taken from the oceans and sold at high prices.

Question 21 refers to the following graphic

Figure 3.7: Percentage of households in each province with no toilet facility

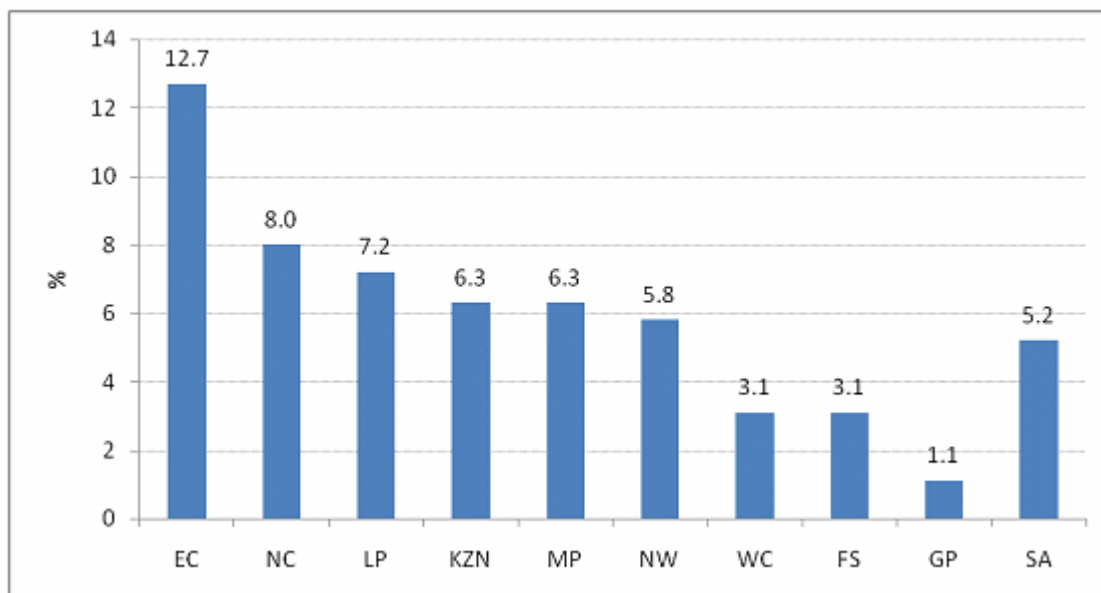


Figure 10: Households without toilets

Question 21: Write Your Answer [3]

Poor sanitation standards in developing countries leave populations vulnerable to many different diseases and increasing death rates.

According to the data collected by the 2011 South African Census, and presented on the graph, which province in South Africa has the highest percentage of households without toilets?

Give the province's name and not the abbreviation for it.

Question 22 refers to the following graphic and text



Figure 11: fresh food

Text 2: New Document

Methods of Preserving Food

Since the beginning of time, people have needed to preserve food so that they wouldn't go hungry when food was in short supply (like in winter in the colder climates.) Early methods of preservation include drying and freezing. A more recent method is canning.

Napoleon Bonaparte believed that, "An army travels on its stomach," and was looking for a better way to feed his armies. In the late 1700's he offered a fortune to anyone who developed a method of preserving food on a large scale. And that was the humble beginning of "canned" food.

Question 22: Write Your Answer [3]

Read the article about preserving food.

What are the the three methods of preserving food that are mentioned?

Question 23: Fill In The Blanks [6]

(1), (2) and (3) are all factors that cause people to have weak immune systems which cannot fight off the T. B. bacterium, and often leads to death.

1	
---	--

2	
---	--

3	
---	--

▶ malnutrition

▶ HIV

▶ headaches

▶ overcrowding

▶ alcohol

▶ smallpox

Question 24: Fill In The Blanks [4]

People who have a high economic status are not prone to getting (1) so more than 6% of the population reaches the age of (2) .

1	
----------	--

2	
----------	--

▶ 90 and above

▶ 85 and above

▶ 75 and above

▶ deadly diseases

▶ sick

Question 25: Fill In The Blanks [4]

Birth rate, also called (1) is the number of live births per (2) people per year.

1	
----------	--

2	
----------	--

▶ mortality rate

▶ crude birth rate

▶ infant birth rate

▶ 100

▶ 1 000

▶ 10 000

Question 26: Fill In The Blanks [4]

The infant mortality rate (I. M. R.) is the number of deaths of babies under (1) of age per (2) births in a given population or region over a given period.

1	
----------	--

2	
----------	--

▶ two years

▶ one year

▶ 1 000 live

▶ 1 000 live and dead

▶ 10 000 live

Question 27 refers to the following graphic



Figure 12: erosion

Question 27: Fill In The Blanks [4]

We abuse soil when we cause (...) and (...).

1		2	
----------	--	----------	--

- ▶ deforestation
- ▶ soil erosion
- ▶ pollution
- ▶ global warming

Question 28: Fill In The Blanks [4]

One of the reasons for conservation is ecological.

Plants depend on (1) for photosynthesis.

Photosynthesis is necessary for all aerobic life on Earth because it maintains normal levels of (2) in the atmosphere.

1		2	
----------	--	----------	--

- ▶ nitrogen
- ▶ oxygen
- ▶ hydrogen
- ▶ carbon dioxide

Question 29: Fill In The Blanks [4]

South Africa's marine species are under threat from (1) and (2).

1		2	
----------	--	----------	--

- ▶ overfishing
- ▶ bigger fish eating smaller fish
- ▶ poaching
- ▶ ice cold waters

Question 30 refers to the following graphic



Figure 13: Palmiet River

Question 30: Fill In The Blanks [4]

The Palmiet River in the Western Cape has a (...) catchment area. The river flows through the Elgin Valley and has (...) irrigation and hydro-power dams along its length.

1		2	
----------	--	----------	--

▶ small

▶ big

▶ two

▶ five

30 Questions, 12 Pages