

WorksheetCloud.com - Question Sheet

Subject: Grade 6 NATURAL SCIENCES

Topic: Natural Sciences: Exam Term 4

Total Marks: 103

Question 1: True/False [2]

Electricity is the flow of electrical charge.

TRUE

FALSE

Question 2 refers to the following graphic

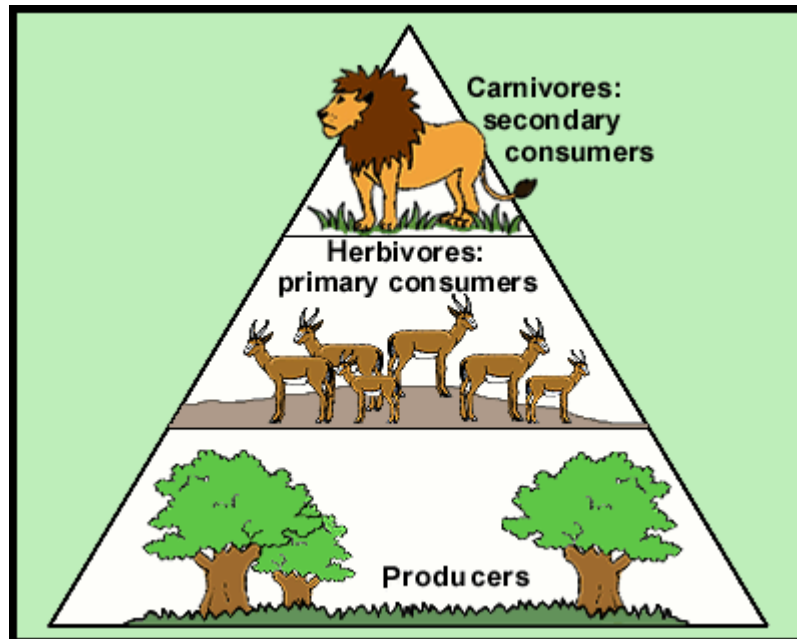


Figure 1: 06ns2

Question 2: True/False [2]

Carnivores are hunters.

TRUE

FALSE

Question 3: True/False [2]

Iron is a vitamin.

TRUE

FALSE

Question 4: True/False [2]

The particles of a liquid are in a fixed position.

TRUE

FALSE

Question 5: True/False [2]

Dissolving occurs when a substance melts.

TRUE

FALSE

Question 6: True/False [2]

The dissolved substances (solutes) in a solution can be separated by filtering or settling.

TRUE

FALSE

Question 7: Multiple Choice [4]

A herbivore, e.g. the Cape Hare, has no

A molars

B pre-molars

C canines

D incisors

Question 8: Multiple Choice [4]

Which of the following will contain the most protein?

A sunflower oil

B olive oil

C any fruit

D beans

Question 9: Multiple Choice [4]

Pollination refers to the process whereby ...

A pollen is transferred from the anther to the stigma.

B pollen is produced by the anther.

C the pollen-tube grows down the style.

D pollen falls from the anther to the ground.

Question 10: Multiple Choice [4]

A wetland can be ... covered by water

- A** partially
- B** completely
- C** partially or completely
- D** neither

Question 11: Multiple Choice [4]

Air pressure is caused by

- A** the large spaces between particles
- B** the size of the particles
- C** the collisions between particles
- D** the mass of the particles

Question 12 refers to the following graphic

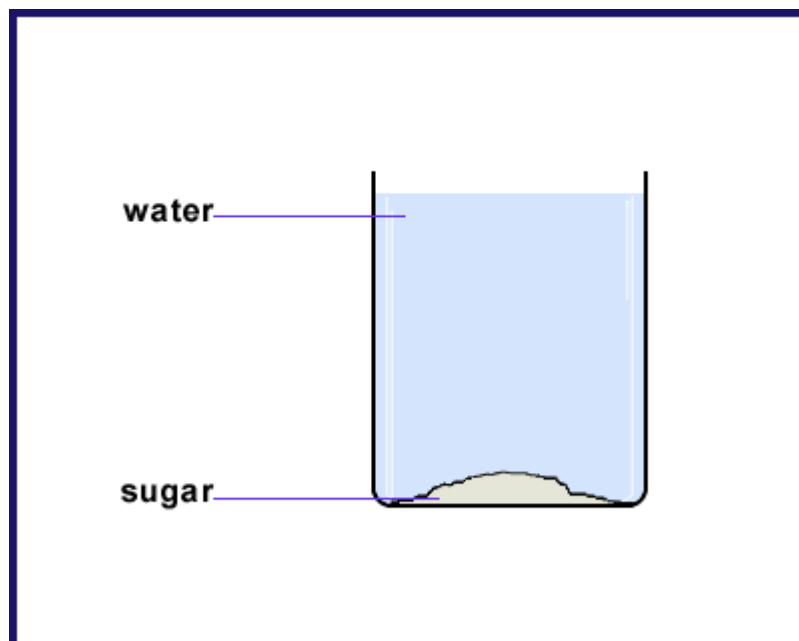


Figure 2: sugar

Question 12: Multiple Choice [4]

Sugar can ... in water.

- A** dissolve
- B** evaporate
- C** condense
- D** filtrate

Question 13: Multiple Choice [4]

Exoskeletons are made of different materials including chitin, calcium compounds and

- A** magnesium
- B** silicates
- C** potassium
- D** bone

Question 14: Write Your Answer [3]

The kudu walks on its

Question 15: Write Your Answer [3]

People who spend a lot of time in the sunlight need a good supply of vitamin

Question 16 refers to the following graphic

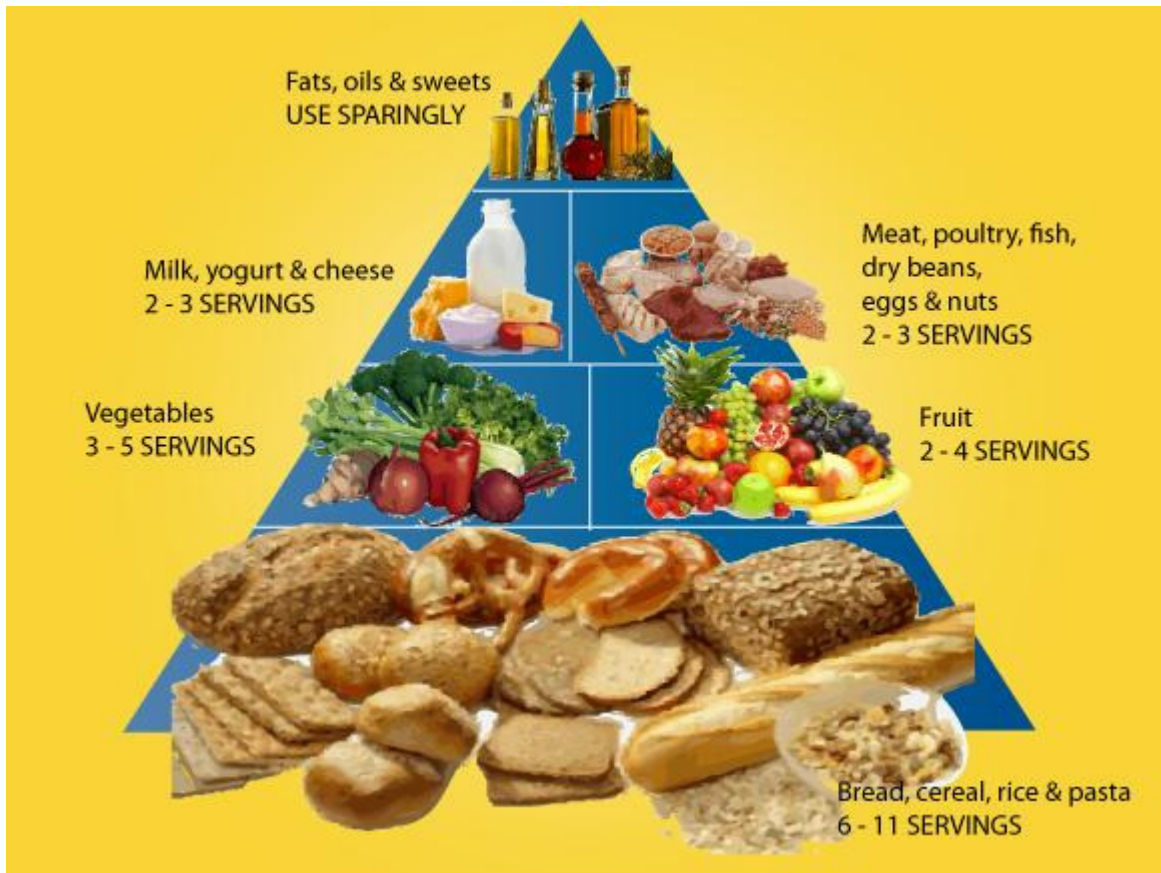


Figure 3: food triangle

Question 16: Write Your Answer [3]

Choose one of the following answers:

The attached food pyramid lists how much food you can consume in a(n): hour/day/week/month?

Question 17 refers to the following graphic

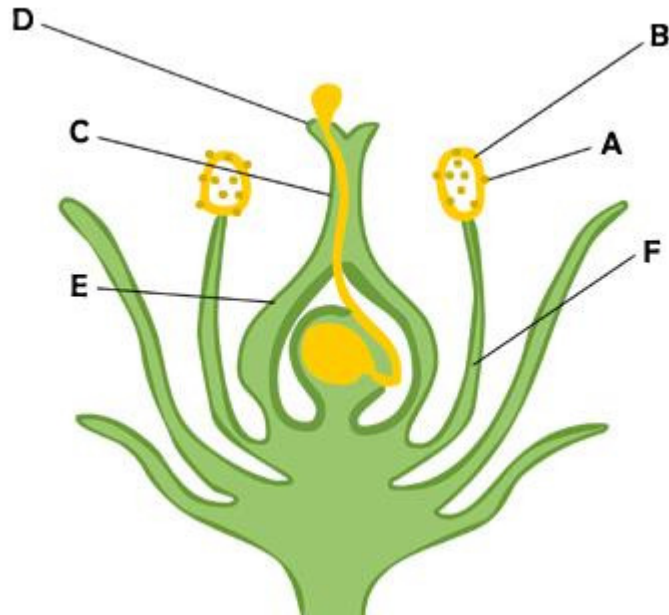


Figure 4: 05ns34.jpg

Question 17: Write Your Answer [3]

In the diagram, the part of the flower labelled D is the

Question 18: Write Your Answer [3]

The word ... is a South African term meaning river reed-bed.

Question 19: Write Your Answer [3]

Air pressure is caused by the ... between particles.

Question 20: Write Your Answer [3]

Mixtures can be either a solid, liquid or a

Question 21 refers to the following graphic

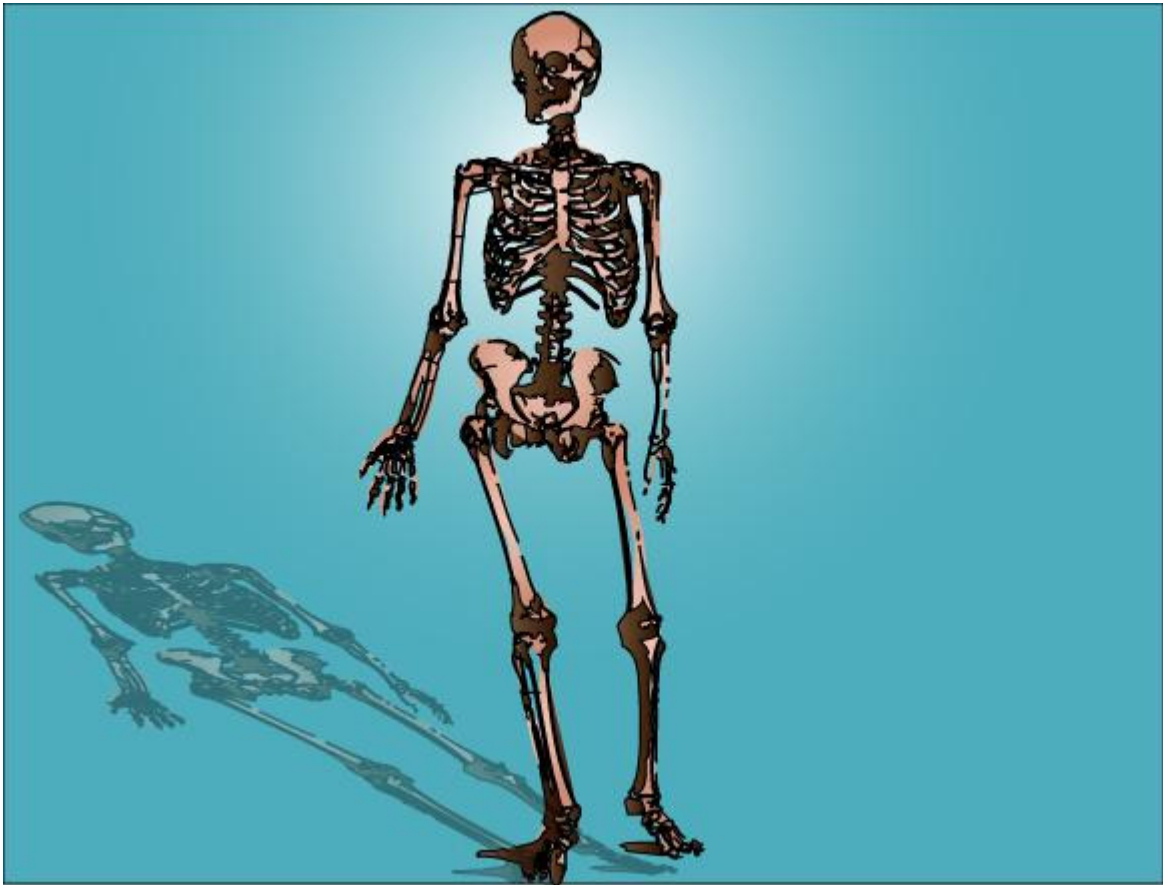


Figure 5: skeleton

Question 21: Write Your Answer [3]

The clavicle and ... protect the shoulder.

Question 22 refers to the following graphic



Figure 6: water and oil

Question 22: Write Your Answer [3]

When a layer is formed at the top or bottom of a liquid, we call this

Question 23: Fill In The Blanks [4]

The leopard can withdraw each claw into a special (1) which (2) it.

1	
---	--

2	
---	--

▶ sheath

▶ pad

▶ sharpens

▶ protects

Question 24: Fill In The Blanks [4]

Wild dogs have flattened (1) with which they (2) their food.

1	
---	--

2	
---	--

▶ pre-molars

▶ molars

▶ tear

▶ chew

Question 25: Fill In The Blanks [4]

Someone who has unhealthy teeth needs to eat lots of (1) since it contains (2) .

1	
---	--

2	
---	--

▶ meat

▶ iron

▶ broccoli

▶ calcium

Question 26 refers to the following graphic

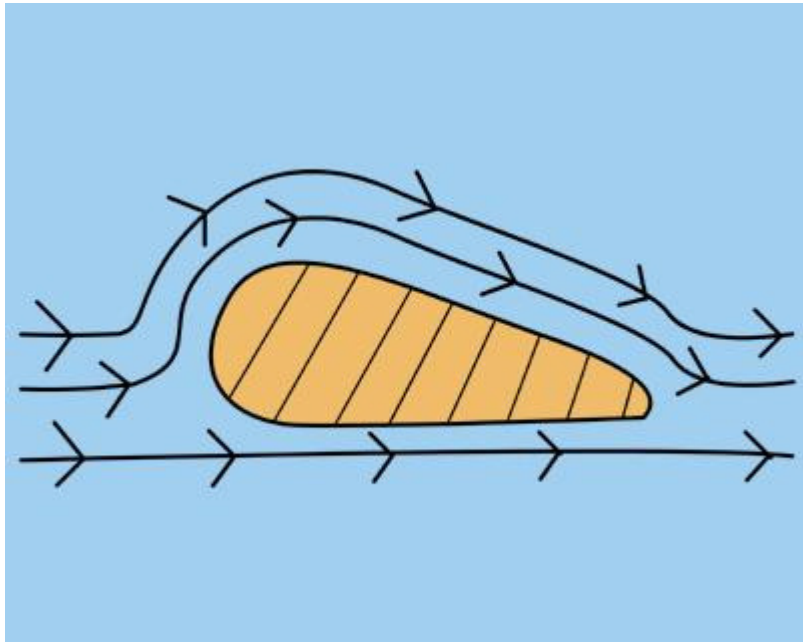


Figure 7: 05ns46.jpg

Question 26: Fill In The Blanks [4]

The air pressure on the bottom of an aeroplane wing is (1) than on the top of the wing. This causes the wing to (2) .

1		2	
---	--	---	--

▶ smaller

▶ greater

▶ lift

▶ drop

▶ less than

Question 27 refers to the following graphic

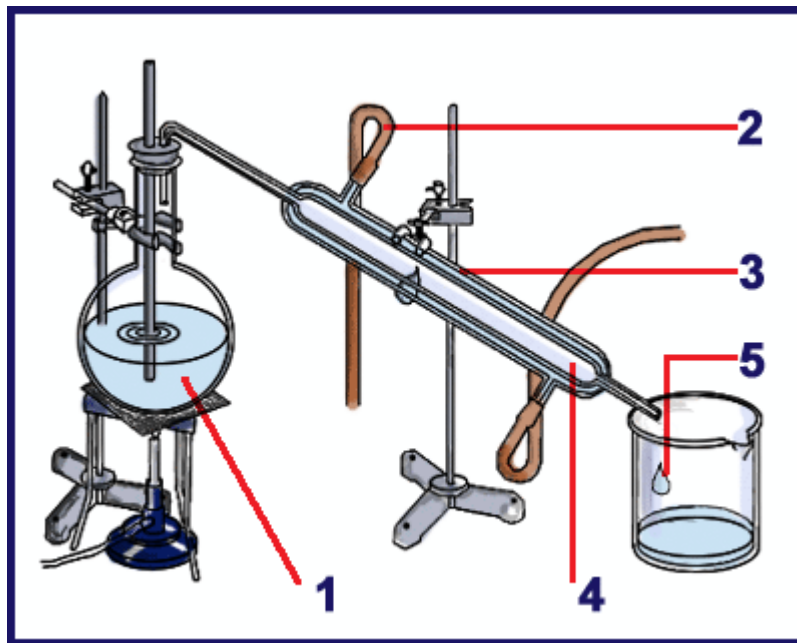


Figure 8: 06ns

Question 27: Fill In The Blanks [6]

When a (1) of a solid and water is boiled, only (2) water vapour boils off. This process is called (3) .

1	
---	--

2	
---	--

3	
---	--

▶ solution

▶ solvent

▶ distillation

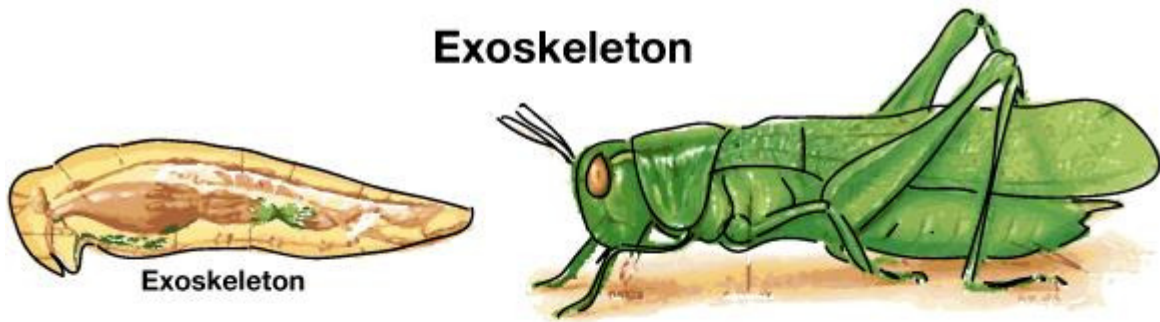
▶ impure

▶ decantation

▶ pure

Question 28 refers to the following graphic

Exoskeleton



Endoskeleton

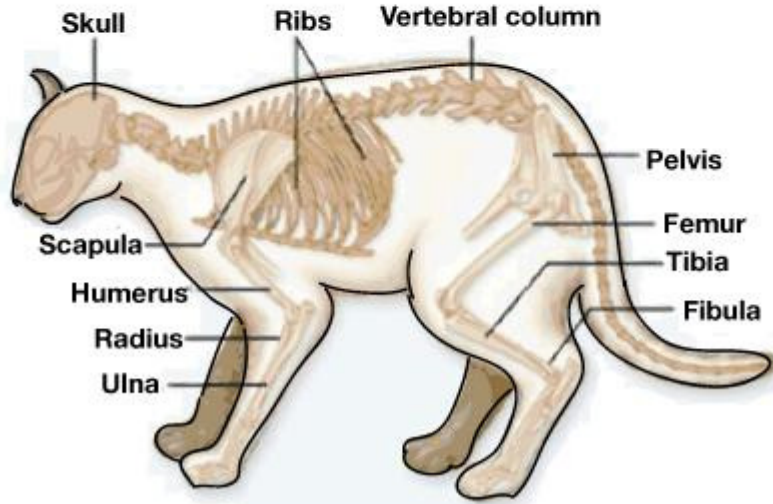


Figure 9: exoskeleton

Question 28: Fill In The Blanks [6]

Invertebrates such as insects and crustaceans have a/an (1) . This is found on the (2) of their bodies. It acts as armour. The skeleton is (3) at the joints so that the animal can move.

1		2	
3			

- ▶ endoskeleton
- ▶ exoskeleton
- ▶ outside
- ▶ flexible
- ▶ inside

Question 29: Fill In The Blanks [4]

When a substance dissolves, solute particles become (1) in the spaces between the (2) particles.

1		2	
---	--	---	--

- ▶ dissolved
- ▶ solute
- ▶ dispersed
- ▶ solvent

Question 30: Fill In The Blanks [4]

What makes the Sun move?

The force of (1) pulls the Sun and the Earth (2) each other.

1		2	
----------	--	----------	--

▶ pressure

▶ gravity

▶ energy

▶ away from

▶ towards